

# ALUMINIUM TRUNKING SYSTEMS

Aluminium cable containment is an excellent choice of material for office areas that need a stylish but mechanically robust trunking and for industrial, workshop and laboratory installation, particularly where a high quality of screening performance is required.

# ALUMINIUM TRUNKING SYSTEMS

The physical properties of aluminium offer the building industry a high quality material that is ideally suited for internal cable management distribution. Aluminium is light to handle with high mechanical strength and impact-resistance. Extruded sections provide attractive profiles and products are finished with a high quality, powder-coat that provides a blemish-resistant surface.

Aluminium perimeter trunking systems provide the specifier, contractor and end-user with elegant, stream-lined containment that offers the practical advantages of inherent LSOH (low smoke zero halogen) and screening properties. Aluminium is an excellent choice for office and educational areas requiring a stylish yet robust trunking system, particularly effective where a high quality of screening performance and security is required.

Marshall-Tufflex offer a wide range of multi-compartment aluminium trunking in different heights, designs, cable capacities and numbers of compartments so whatever the requirements, there will always be a perfect solution with Marshall-Tufflex.

Choose the UK's number one in cable management.

## Standard colour

The standard colour for each Marshall-Tufflex range is shown within each relevant product information section, although silver grey 9006 is our most popular colour option in aluminium trunking.

The below table identifies the relevant RAL colour reference for all our standard colour options, dependent on product range. We would be happy to quote for any other colour requirements, please see the Special colours section below.

Standard Colours	
WH	SG
WH: White	SG: Silver Grey

Material	Standard colour	Colour code suffix	RAL
Aluminium	Silver Grey	SG	9006
	White	WH	9016

**Please note:** it is dependent on the product range as to which colour is available as standard.

## Special colours

To help enhance the style of an installation, different variations of solid colour are sometimes required.

We can provide special colours in a painted solution dependent on your client's preference. All special colour requirements will need to be specified as a RAL colour.

These colours are made to order and therefore are subject to set up charges and a longer lead time. For more information and a quotation contact our Technical Team on +44 (0)1424 856688.



**Please note:** due to different processes and materials utilised, it may not always be possible to obtain an exact colour match between the extruded and moulded product.

### Environmental & sustainability



- Aluminium is naturally found combined in over 270 different minerals, the chief source of which is bauxite ore.
- Its light weight means less strain on supporting structures, easier handling and reduced transport costs.
- 100% recyclable material and can be recycled many times without loss of quality.
- Recycling facilities are well established.

### EMI protection



- First class EMI screening performance especially at higher frequencies.

### Fire performance



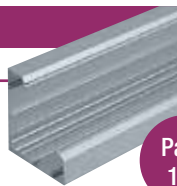
- Aluminium systems specified with polycarbonate fittings meet accepted requirements for LSOH.
- Withstands high temperatures with a melting point of 655°C (1211°F).
- Polycarbonate fittings are fire rated to UL94 V0.

Aluminium systems are available with standard powder coat finishes in white RAL 9016 or silver-grey RAL 9006\*. For other finishes, please call our Technical Team on +44 (0)1424 856688.

**Bench trunking**

**105 x 105mm**

Desk and laboratory trunking.



Page 152

**Sterling Curve Profile 1**

**167 x 50mm**

A stylish curved three compartment dado trunking system designed to stop clutter, avoid dust traps and to make cleaning easy.



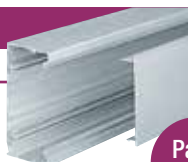
Page 160

\*Only available in silver-grey RAL 9006 as standard.

**Elegance 110**

**110 x 55mm**

Dado and skirting trunking with a single cover.



Page 154

**Sterling Curve Profile 2**

**167 x 50mm**

A stylish curved three compartment skirting trunking system designed to stop clutter, avoid dust traps and to make cleaning easy.



Page 160

\*Only available in silver-grey RAL 9006 as standard.

**Sterling Profile 1**

**167 x 50mm**

Dado trunking with three separate compartments and individual covers for each compartment.



Page 156

**Elegance 170**

**170 x 55mm**

A single cover "C" style trunking that can be sub-divided if required giving the installer versatility and added capacity. Can be used at dado and skirting level.



Page 165

\*Only available in silver-grey RAL 9006 as standard.

**Sterling Profile 2**

**167 x 50mm**

Skirting trunking with three separate compartments and individual covers for each compartment.

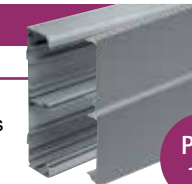


Page 156

**Twin Plus**

**210 x 57mm**

Large capacity dado and skirting trunking with two deep compartments with in-built segregation of power and data.



Page 167

\*Only available in silver-grey RAL 9006 as standard.

**Sterling Profile 3**

**167 x 50mm**

Dado and skirting trunking with three separate compartments and individual covers for each compartment.

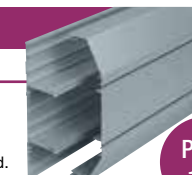


Page 156

**XL301**

**220 x 65mm**

Dado trunking with three deep compartments.



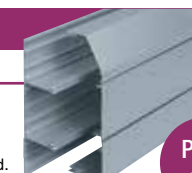
Page 170

\*Only available in silver-grey RAL 9006 as standard.

**XL302**

**220 x 65mm**

Skirting trunking with three deep compartments.



Page 170

\*Only available in silver-grey RAL 9006 as standard.

Note: you may use the rule on the left of this page to check profile sizes.

# BENCH TRUNKING ALUMINIUM



Bench trunking aluminium is a robust angled trunking that can be mounted directly on to desks, work benches or fitted under shelving.

### Product information

- 105 x 105mm
- Suitable for desk, bench or worktop applications
- Can be subdivided
- Fully compatible with Sterling flush power and data accessories
- Aluminium systems specified with polycarbonate fittings meet accepted requirements for LSOH

### Data information

- Compliant up to Cat 7a
- Adjustable data box 32-40mm
- Screened divider and data boxes

**Note:** Allowance must be made for earthing the trunking system to comply with the current version of the BS 7671 Wiring Regulations.



Can be subdivided

**Part M**

For 1 and 2 gang box assemblies with coloured flush plates to comply with Part M please refer to page 54.

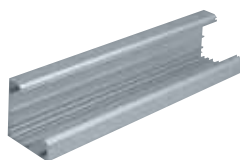
**#Data fittings**

For made to order fittings to meet Cat 7a requirements please contact our Technical Team on +44 (0)1424 856688

Standard Colours	
WH	SG
WH: White	SG: Silver Grey

**Colour code suffix:** to indicate the finish you require, add the required colour code to the end of the product code.

## Basic components



### Base unit

code	size	pack
MBTAB105SG	105 x 105mm	1 x 3m



### Cover

code	material	pack
MBTAL105SG	aluminium	1 x 3m
ETL1WH	PVC-U	8 x 3m

**Aluminium base and PVC-U cover**

Our PVC-U cover is compatible with our aluminium base. Order ETL1WH PVC-U cover

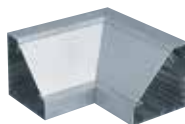
## Fittings



### End cap (steel)

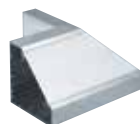
code	pack
BECA105SG	1

with fixing screws



### Internal angle (aluminium)

code	pack
BIAA105SG	1



### External angle (aluminium)

code	pack
BEAA105SG	1

p267

Technical Information

Components



**Dividing fillet (PVC-U)**

code	description	pack
BDF105WH	4 x 3m	



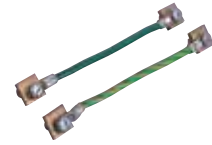
**Earth bonding kit**

code	description	pack
LBT3		1



**Coupler pin**

code	description	pack
LDP1	ø2.0 x 20mm	10



**Bonding strap**

code	description	pack
LBS1	base to base 32 amp	5

To aid alignment of base profiles



**Bonding strap**

code	description	pack
LBS2	cover to base	5



**Bonding strap**

code	description	pack
LBS3	end cap to base	1

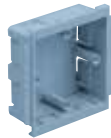
Boxes and plates (polycarbonate)



**RCD/MCB housing**

code	description	pack
EAHCA1MWH	polycarbonate	1

Not available in silver grey.  
\*Up to 4 modules can be accommodated.  
**Note:** RCDs and MCBs are not supplied by Marshall-Tufflex.



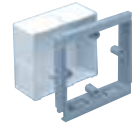
**1 gang accessory box 30mm deep**

code	description	pack
ESSB1SG		1
ESSBA1WH		1



**2 gang accessory box 30mm deep**

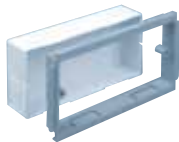
code	description	pack
ESSB2SG		1
ESSBA2WH		1



**1 gang adjustable depth box**

code	description	pack
EAB1SG	32-47mm	1

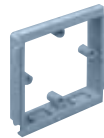
Please see page 261 for more information on the range of adjustable boxes



**2 gang adjustable depth box**

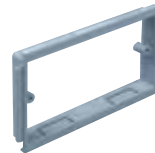
code	description	pack
EAB2SG	32 - 47mm	1

Please see page 261 for more information on the range of adjustable boxes



**1 gang accessory plate**

code	description	pack
ESSP1SG		2



**2 gang accessory plate**

code	description	pack
ESSP2SG		2

Screened boxes



**1 gang screened accessory box (polycarbonate)**

code	description	pack
ESSBA1SWH	30mm	20



**2 gang screened accessory box (polycarbonate)**

code	description	pack
ESSBA2SWH	30mm	10

**Screening**

Conductive spray (CS) is unique to Marshall-Tufflex and is applied in the factory to assist with screening from electromagnetic interference to data and communications cabling within trunking systems. The coating is applied to a range of data boxes, covers, clip-on components and fabricated fittings.

**WARNING:** A CS coating is not suitable for low voltage circuits. As per the current version of BS 7671 wiring regulations. For data/voice use only.

# ELEGANCE 110 ALUMINIUM

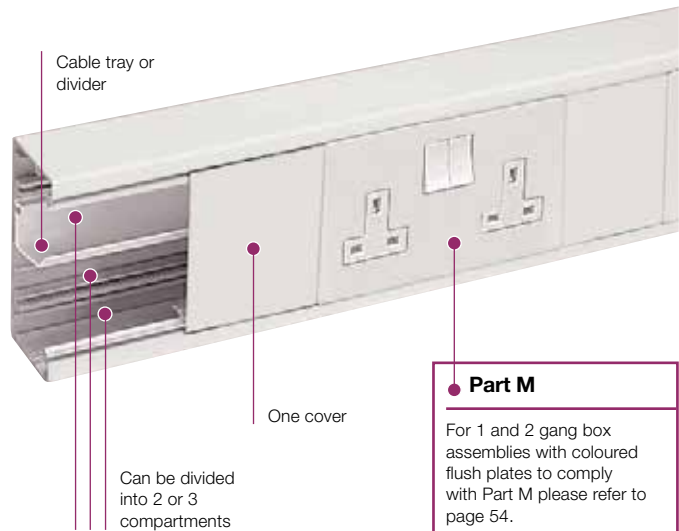
Elegance 110 aluminium is a small, rectangular, dado trunking system with a single cover. It is particularly useful for workshop or laboratory supply or in a commercial environment where extra mechanical strength is necessary.



**Product information**

- 110 x 55mm
- Compliant up to Cat 7a
- Can be subdivided into 2 or 3 compartments
- Suitable for dado and skirting applications
- Fully compatible with Marshall-Tufflex flush power and data accessories and standard UK wiring power and accessories
- Data compliant 25mm and 50mm bend radius
- Aluminium systems specified with polycarbonate fittings meet accepted requirements for LSOH

**Note:** Allowance must be made for earthing the trunking system to comply with the current version of the BS 7671 Wiring Regulations.

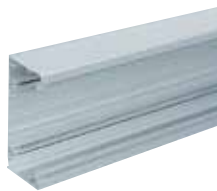


**Part M**

For 1 and 2 gang box assemblies with coloured flush plates to comply with Part M please refer to page 54.

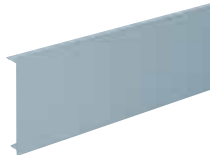
Standard Colours	
WH	SG
WH: White	SG: Silver Grey

**Colour code suffix:** to indicate the finish you require, add the required colour code to the end of the product code.



**Base unit**

code	pack
LTB2SG	1 x 3m



**Main compartment cover**

code	pack
LTL1SG	1 x 3m

ALUMINIUM TRUNKING SYSTEMS

Basic components

Fittings



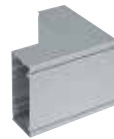
**End caps (screws included)**

code	pack
LECPSSG	1



**Internal bend**

code	pack
LIBPSSG	1



**External bend**

code	pack
LXPSSG	1



**Flat angle**

code	pack
LFASSG	1



**Flat tee**

code	pack
LFTSSG	1

p268

Technical Information



Components



**Dividing fillet (PVC-U)**

code	description	pack
LDF1	unscreened	8 x 3m



**Dividing tray (PVC-U)**

code	description	pack
EDF2		8 x 3m



**Earth bonding kit**

code	description	pack
LBT3		1



**Coupler pin**

code	description	pack
LDP1	ø2.0 x 20mm	10

To aid alignment of base profiles



**Bonding strap**

code	description	pack
LBS1	base to base 32Amp	5



**Bonding strap**

code	description	pack
LBS2	cover to base	5



**Bonding strap**

code	description	pack
LBS5	end cap to base	1

Boxes and plates (polycarbonate)



**RCD/MCB housing**

code	description	pack
EAHCA1MWH	polycarbonate	1

Not available in silver grey.  
\*Up to 4 modules can be accommodated.  
**Note:** RCDs and MCBs are not supplied by Marshall-Tufflex.



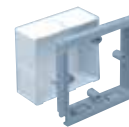
**1 gang accessory box 30mm deep**

code	description	pack
ESSB1SG		1
ESSBA1WH		1



**2 gang accessory box 30mm deep**

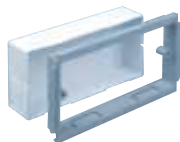
code	description	pack
ESSB2SG		1
ESSBA2WH		1



**1 gang adjustable depth box**

code	depth	pack
EAB1SG	32-47mm	1

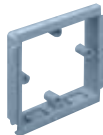
Fully adjustable to 47mm.  
Please see page 261 for more information.



**2 gang adjustable depth box**

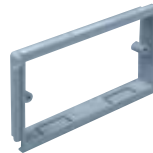
code	depth	pack
EAB2SG	32 - 47mm	1

Fully adjustable to 47mm.  
Please see page 261 for more information.



**1 gang accessory plate**

code	description	pack
ESSP1SG		2



**2 gang accessory plate**

code	description	pack
ESSP2SG		2

Screened boxes



**1 gang screened accessory box (polycarbonate)**

code	depth	pack
ESSBA1SWH	30mm	20



**2 gang screened accessory box (polycarbonate)**

code	depth	pack
ESSBA2SWH	30mm	10

**Screening**

Conductive spray (CS) is unique to Marshall-Tufflex and is applied in the factory to assist with screening from electromagnetic interference to data and communications cabling within trunking systems. The coating is applied to a range of data boxes, covers, clip-on components and fabricated fittings.

**WARNING:** A CS coating is not suitable for low voltage circuits. As per the current version of BS 7671 wiring regulations. For data/voice use only.

# STERLING ALUMINIUM PROFILE 1, 2 AND 3



Sterling Aluminium Profile is a popular and stylish looking trunking system that offers a variety of trunking profiles with separate compartment covers.

**Product information**

- 167 x 50mm
- 3 segregated compartments
- Can be subdivided
- Suitable for dado applications
- A range of polycarbonate clip-on fittings with built-in overlaps
- Fully compatible with Sterling flush power and data accessories
- Aluminium systems specified with polycarbonate fittings meet accepted requirements for LSOH

**Data information**

- Compliant up to Cat 7a
- Data compliant 25mm and 50mm bend radius
- Adjustable data box 32-40mm
- Screened divider and data boxes



See page 159 for quick reference chart

**Part M**

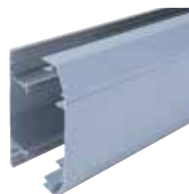
For 1 and 2 gang box assemblies with coloured flush plates to comply with Part M please refer to page 54.

Standard Colours	
WH	SG
WH: White	SG: Silver Grey

**Colour code suffix:** to indicate the finish you require, add the required colour code to the end of the product code.

ALUMINIUM TRUNKING SYSTEMS

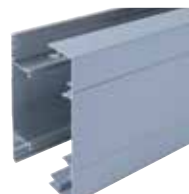
Trunking profiles



**Sterling Aluminium Profile 1**  
size: 167 x 50mm



**Sterling Aluminium Profile 2**  
size: 167 x 50mm



**Sterling Aluminium Profile 3**  
size: 167 x 50mm

Basic components



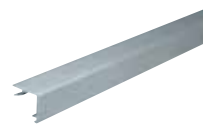
**Base unit**  
code            pack  
ETB300MMF\*    1 x 3m



**Main compartment cover**  
code            pack  
LTL1SG            1 x 3m



**Angled cover**  
code            pack  
ETAC300SG        1 x 3m



**Square cover**  
code            pack  
ETSC300SG        1 x 3m

\*MF=Mill finish

p269

Technical Information



Profile 1 fittings



**Profile 1 Aluminium Coupler**

code	description	pack
ECP1MASG	polycarbonate	1



**Profile 1 Aluminium End cap**

code	description	pack
EECP1MASG	polycarbonate	1



**Profile 1 Aluminium Internal bend**

code	description	pack
EIBP1MASG	polycarbonate	1



**Profile 1 Aluminium External bend**

code	description	pack
EXBP1MASG	polycarbonate	1



**Profile 1 Aluminium Flat angle - up/down**

code	description	pack
EFA1ASG	aluminium	1



**Profile 1 Aluminium Flat tee - up/down**

code	description	pack
EFT1ASG	aluminium	1

Profile 2 fittings



**Profile 2 Aluminium Coupler**

code	description	pack
ECP2MASG	polycarbonate	1



**Profile 2 Aluminium End cap**

code	description	pack
EECP2MALHSG	polycarbonate	1
EECP2MARHSG	polycarbonate	1

LH = Left hand RH = Right hand



**Profile 2 Aluminium Internal bend**

code	description	pack
EIBP2MASG	polycarbonate	1



**Profile 2 Aluminium External bend**

code	description	pack
EXBP2MASG	polycarbonate	1



**Profile 2 Aluminium Flat angle - up**

code	description	pack
EFA2UASG	aluminium	1



**Profile 2 Aluminium Flat angle - down**

code	description	pack
EFA2DASG	aluminium	1

**Sterling Profile 2 flat tees**

Where profiles have one angled cover and one square cover, as with Sterling Profile 2, it is possible to create a tee by changing the top or bottom cover so that covers match the profile of the trunking. For example:

- Upward tee – select Profile 1 tee remove the angled bottom cover and replace with square cover.
- Downward tee – select Profile 3 tee remove the square top cover and replace with angled cover.

Profile 3 fittings



**Profile 3 Aluminium Coupler 3 piece**

code	description	pack
ECP3ASG	polycarbonate	1



**Profile 3 Aluminium End cap 3 piece**

code	description	pack
EECP3ASG	polycarbonate	1



**Profile 3 Aluminium Internal bend 3 piece**

code	description	pack
EIBP3ASG	polycarbonate	1



**Profile 3 Aluminium External bend 3 piece**

code	description	pack
EXBP3ASG	polycarbonate	1



**Profile 3 Aluminium Flat angle**

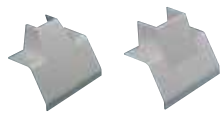
code	description	pack
EFA3ASG	aluminium	1



**Profile 3 Aluminium Flat tee**

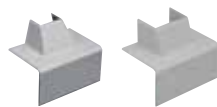
code	description	pack
EFT3ASG	aluminium	1

Fittings



**Angled mini-trunking adaptor (polycarbonate)**

code	Description	pack
EATA402SG	MMT2	5
EATA404SG	MMT4	1



**Square mini-trunking adaptor (polycarbonate)**

code	Description	pack
ESTA402SG	MMT2	5
ESTA404SG*	MMT4	1

\*Not available in white

Components



**Earth bonding kit**

code	description	pack
LBT3		1



**Coupler pin**

code	description	pack
LDP1	ø2.0 x 20mm	10

To aid alignment of base profiles



**Bonding strap**

code	description	pack
LBS1	base to base 32Amp	5



**Bonding strap**

code	description	pack
LBS2	cover to base	5



**Main crossover bridge (PVC-U)**

code	pack
EMCB1	5



**Angled cable retainer (PVC-U)**

code	pack
EACR1	10

ALUMINIUM TRUNKING SYSTEMS

Boxes and plates (polycarbonate)

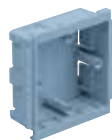


**RCD/MCB housing**

code	description	pack
EAHCA1MWH	polycarbonate	1

Not available in silver grey.  
\*Up to 4 modules can be accommodated.

**Note:** RCDs and MCBs are not supplied by Marshall-Tufflex.



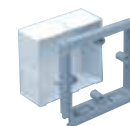
**1 gang accessory box 30mm deep**

code	pack
ESSB1SG	1
ESSBA1WH	1



**2 gang accessory box 30mm deep**

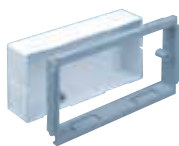
code	pack
ESSB2SG	1
ESSBA2WH	1



**1 gang adjustable depth box**

code	depth	pack
EAB1SG	32-47mm	1

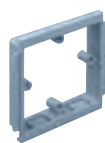
Please see page 261 for more information on the range of adjustable boxes



**2 gang adjustable depth box**

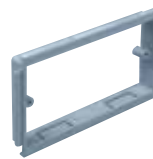
code	depth	pack
EAB2SG	32 - 47mm	1

Please see page 261 for more information on the range of adjustable boxes



**1 gang accessory plate**

code	pack
ESSP1SG	2



**2 gang accessory plate**

code	pack
ESSP2SG	2

**Quick reference chart**  
Sterling Profile aluminium component chart

**Base unit**

Pack 1 x 3m  
Milled aluminium



**Main compartment cover**

Pack 1 x 3m



**Angled cover**

Pack 1 x 3m



**Square cover**

Pack 1 x 3m



**Couplers**

Pack 1



**End caps**

Pack 1  
Left or right handed



**Internal bends**

Pack 1  
Internal base corner needs to be mitred



**External bends**

Pack 1  
External base corner needs to be mitred



**Flat angles**

Pack 1  
Upward or downward



**† Flat tees**

Pack 1  
† See Flat Tee information below



**3 compartment**

Profile 1 167 x 50mm	Profile 2 167 x 50mm	Profile 3 167 x 50mm
ETB300MMF	ETB300MMF	ETB300MMF
LTL1SG	LTL1SG	LTL1SG
2 x ETAC300SG	1 x ETAC300SG	-
-	1x ETSC300SG	2 x ETSC300SG
ECP1MASG	ECP2MASG	ECP3ASG
EECP1MASG	EECP2MALHSG EECP2MARHSG	EECP3ASG
EIBP1MASG	EIBP2MASG	EIBP3ASG
EXBP1MASG	EXBP2MASG	EXBP3ASG
EFA1ASG	EFA2UASG EFA2DASG	EFA3ASG
EFT1ASG	†	EFT3ASG

**† Sterling Profile 2 flat tees**

Where profiles have one angled cover and one square cover, as with Sterling Profile 2, it is possible to create a tee by changing the top or bottom cover so that covers match the profile of the trunking. For example:

- Upward tee – select Profile 1 tee remove the angled bottom cover and replace with square cover.
- Downward tee – select Profile 3 tee remove the square top cover and replace with angled cover.

**Screened boxes**



**1 gang screened accessory box (polycarbonate)**

code	depth	pack
ESSBA1SWH	30mm	20



**2 gang screened accessory box (polycarbonate)**

code	depth	pack
ESSBA2SWH	30mm	10

**Screening**

Conductive spray (CS) is unique to Marshall-Tufflex and is applied in the factory to assist with screening from electromagnetic interference to data and communications cabling within trunking systems. The coating is applied to a range of data boxes, covers, clip-on components and fabricated fittings.

**WARNING:** A CS coating is not suitable for low voltage circuits. As per the current version of BS 7671 wiring regulations. For data/voice use only.



# STERLING CURVE ALUMINIUM PROFILE 1 AND 2

Sterling Curve Aluminium is a robust and stylish Cat 7a compliant perimeter dado or skirting system that is easy and cost effective to use. The adaptable system has 1 or 2 curved data compartments designed to stop clutter, avoid dust traps and to make cleaning easy.

### Product information

- 167 x 50mm
- 3 segregated compartments
- Suitable for dado and skirting application
- Boxes available to comply with Part M (DDA)
- Comprehensive range of flush power and data accessories
- Single piece moulded polycarbonate couplers, end caps, internal and external bends
- Fabricated aluminium flat tees and flat angles
- Utilises ETB300MMF base and LTL1 cover so all centre compartment fittings from the Sterling Aluminium range are compatible

### Data information

- Compliant up to Cat 7a
- Standard bend radius 25mm
- Data fittings available for bend radius up to 50mm
- Adjustable data box 32-40mm
- Screened data boxes



Individual covers for each compartment

See page 164 for quick reference chart

**Part M**

For box assemblies and spacers that meet the requirements of Part M (DDA) please refer to page 54.

Standard Colour
SG
SG: Silver Grey

Trunking profiles



**Curve Profile 1**  
size 167 x 50mm

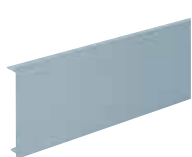


**Curve Profile 2**  
size 167 x 50mm

Basic components



**Base unit**  
code ETB300MMF pack 1 x 3m



**Main compartment cover**  
code LTL1SG pack 1 x 3m



**Curve cover**  
code CETC300SG pack 1 x 3m



**Square cover**  
code ETSC300SG pack 1 x 3m

Curve Profile 1 fittings



**Curve Profile 1  
Coupler**  
code description pack  
CECP1MASG polycarbonate 1



**Curve Profile 1  
End cap**  
code description pack  
CEEC1MASG polycarbonate 1



**Curve Profile 1  
Internal bend**  
code description pack  
CEIBP1MASG polycarbonate 1



**Curve Profile 1  
External bend**  
code description pack  
CEXBP1MASG polycarbonate 1



**Curve Profile 1  
Flat angle fabricated**  
code pack  
CEFA1ASG 1



**Curve Profile 1  
Flat tee fabricated**  
code pack  
CEFT1ASG 1

Curve Profile 2 fittings



**Curve Profile 2  
Coupler**  
code description pack  
CECP2MASG polycarbonate 1



**Curve Profile 2  
End cap**  
code description pack  
CEEC2MARHSG (right) polycarbonate 1  
CEEC2MALHSG (left) polycarbonate 1



**Curve Profile 2  
Internal bend**  
code description pack  
CEIBP2MASG polycarbonate 1



**Curve Profile 2  
External bend**  
code description pack  
CEXBP2MASG polycarbonate 1



**Curve Profile 2  
Flat angle up fabricated**  
code pack  
CEFA2ASG 1



**Curve Profile 2  
Flat tee fabricated**  
code pack  
CEFT2ASG 1

Components



Earth bonding kit	
code	pack
LBT3	1



Coupler pin		
code	description	pack
LDP1	ø2.0 x 20mm	10

To aid alignment of base profiles



Bonding strap		
code	description	pack
LBS2	base to base & cover to base	5

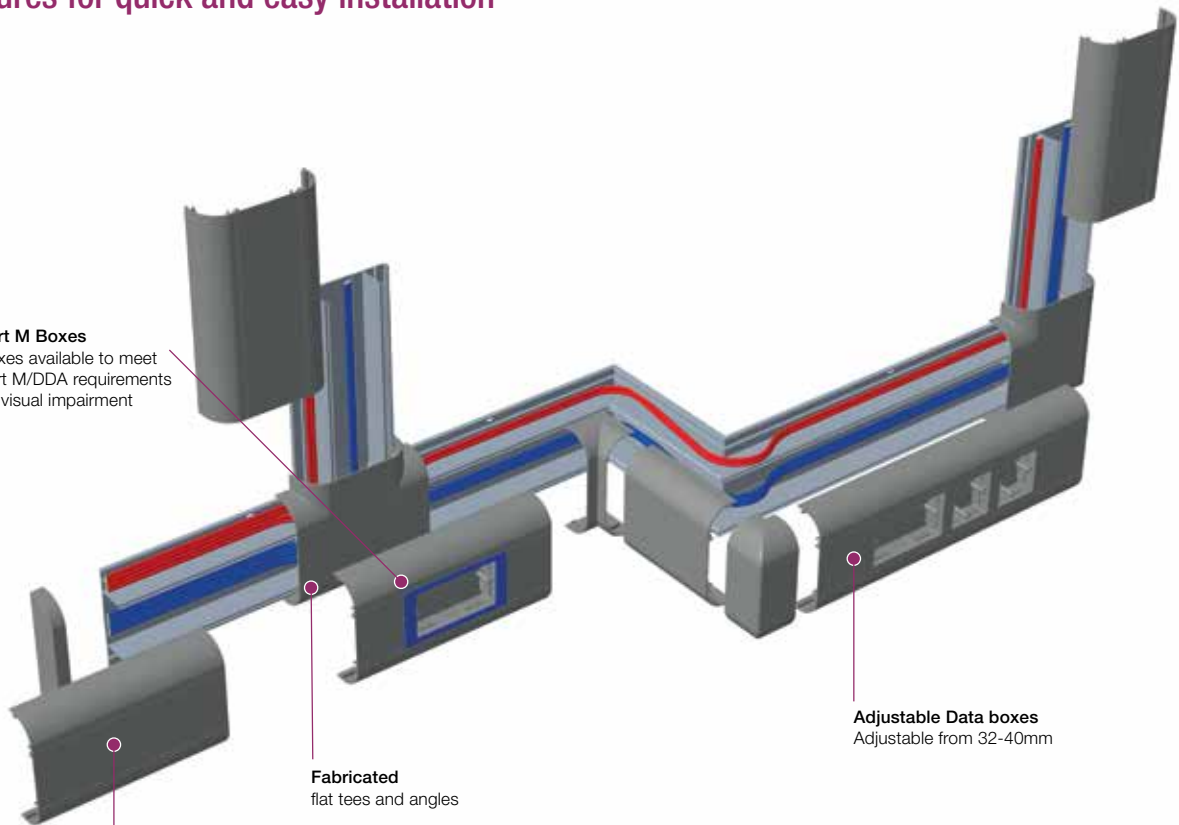


Main crossover bridge (PVC-U)	
code	pack
EMCB1	5

## Sterling Curve Aluminium Trunking

Sterling Curve Aluminium features a host of practical features for quick and easy installation

**Part M Boxes**  
Boxes available to meet Part M/DDA requirements for visual impairment



**Fabricated**  
flat tees and angles

**Adjustable Data boxes**  
Adjustable from 32-40mm

**Gently contoured profile**  
Easy to clean  
Impossible to clutter



Boxes and plates



**RCD/MCB housing**

code	description	pack
EAHCA1MWH	polycarbonate	1

\*Up to 4 modules can be accommodated

**Note:** RCDs and MCBs are not supplied by Marshall-Tufflex



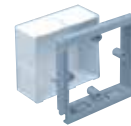
**1 gang accessory box 30mm deep (polycarbonate)**

code	description	pack
ESSB1SG		1



**2 gang accessory box 30mm deep (polycarbonate)**

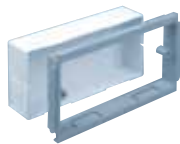
code	description	pack
ESSB2SG		1



**1 gang adjustable depth box (polycarbonate)**

code	depth	pack
EAB1SG	32-47mm	1

Please see page 261 for more information on the range of adjustable boxes



**2 gang adjustable depth box (polycarbonate)**

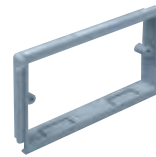
code	depth	pack
EAB2SG	32 - 47mm	1

Please see page 261 for more information on the range of adjustable boxes



**1 gang accessory plate (polycarbonate)**

code	description	pack
ESSP1SG		2



**2 gang accessory plate (polycarbonate)**

code	description	pack
ESSP2SG		2

Screened boxes



**1 gang screened accessory box (polycarbonate)**

code	depth	pack
ESSBA1SWH	30mm	20



**2 gang screened accessory box (polycarbonate)**

code	depth	pack
ESSBA2SWH	30mm	10

**Screening**

Conductive spray (CS) is unique to Marshall-Tufflex and is applied in the factory to assist with screening from electromagnetic interference to data and communications cabling within trunking systems. The coating is applied to a range of data boxes, covers, clip-on components and fabricated fittings.

**WARNING:** A CS coating is not suitable for low voltage circuits. As per the current version of BS 7671 wiring regulations. For data/voice use only.

## Quick reference chart

Sterling Curve Aluminium

### 3 compartment

Profile 1	Profile 2
167 x 50mm	167 x 50mm



	Profile 1	Profile 2
<b>Base unit</b> Pack 1 x 3m	ETB300MMF	ETB300MMF
<b>Main compartment cover</b> Pack 1 x 3m	LTL1SG	LTL1SG
<b>Curve cover</b> Pack 1 x 3m	2 x CETC300SG	CETC300SG
<b>Square cover</b> Pack 1 x 3m	–	ETSC300SG
<b>Couplers</b> Pack 1	CECP1MASG	CECP2MASG
<b>End caps</b> Pack 1	CEECP1MASG	CEECP2MARHSG CEECP2MALHSG
<b>Internal bend</b> Pack 1	CEIBP1MASG	CEIBP2MASG
<b>External bend</b> Pack 1	CEXBP1MASG	CEXBP2MASG
<b>Flat angle fabricated</b> Pack 1	CEFA1ASG	–
<b>Flat angle up fabricated</b> Pack 1	–	CEFA2ASG
<b>Flat tee fabricated</b> Pack 1	CEFT1ASG	CEFT2ASG

# ELEGANCE 170 ALUMINIUM

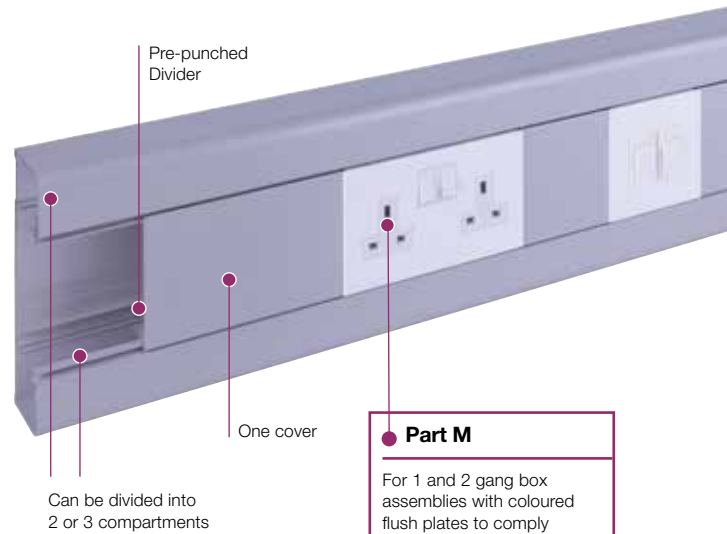
Elegance 170 aluminium is a sleek and rounded 170x55mm rectangular dado trunking system with a single cover, ideal for use in office or educational environments where extra mechanical strength and a higher cable capacity is required.



**Product information**

- 170 x 55mm
- Compliant up to Cat 7a
- "C" type section can be used as a single large compartment section or can be further subdivided into 2 or 3 compartments
- Suitable for dado and skirting applications
- Plain or pre-punched dividers for quick installation
- A range of fabricated fittings
- Part M compliant
- Data compliant 25mm and 50mm bend radius
- Compatible with Marshall-Tufflex flush power and data accessories and standard UK wiring power and accessories
- Standard silver-grey RAL 9006 powder coat finish
- Aluminium systems specified with polycarbonate fittings meet accepted requirements for LSOH

**Note:** Allowance must be made for earthing the trunking system to comply with the current version of the BS 7671 Wiring Regulations.



**Part M**

For 1 and 2 gang box assemblies with coloured flush plates to comply with Part M please refer to page 54.

Standard Colours
SG
SG: Silver Grey

Basic components



**Base unit and cover**

code	pack
LP1050SG	1 x 2.9m

**Note:** In order to subdivide Elegance 170 dividing fillets should be used

Fittings



**End cap (screws included)**

code	pack
LP1030SG	1



**Internal bend 90°**

code	pack
LP1020SG	1



**External bend 90° slow**

code	pack
LP1026SG	1



**Flat angle**

code	pack
LP1040SG	1



**Flat tee**

code	pack
LP1045SG	1

p268  
Technical Information

Components



**Galvanised steel dividing fillet (pre-punched)**

code	length	pack
LP1005	1.45m	1



**Plastic dividing fillet (un-punched)**

code	length	pack
LP1006	1.45m	1



**Earth bonding kit**

code	pack
LBT3	1

**Note:** Fastons supplied suit 1.5mm to 2.5mm cable (blue) and 4.0mm to 6.0mm (yellow).



**Coupler pin**

code	description	pack
LDP1	ø2.0 x 20mm	10

To aid alignment of base profiles



**Bonding strap**

code	description	pack
ESBS1	base to base	5



**Bonding strap**

code	description	pack
LBS2	cover to base	5



**Bonding strap**

code	description	pack
LBS5	end cap to base	1

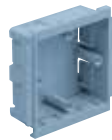
Boxes and plates (polycarbonate)



**RCD/MCB housing**

code	description	pack
EAHCA1MWH	polycarbonate	1

Not available in silver grey.  
\*Up to 4 modules can be accommodated.  
**Note:** RCDs and MCBs are not supplied by Marshall-Tufflex.



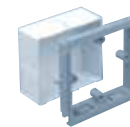
**1 gang accessory box 30mm deep**

code	pack
ESSB1SG	1



**2 gang accessory box 30mm deep**

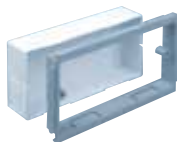
code	pack
ESSB2SG	1



**1 gang adjustable depth box**

code	depth	pack
EAB1SG	32-47mm	1

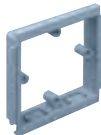
Please see page 261 for more information on the range of adjustable boxes



**2 gang adjustable depth box**

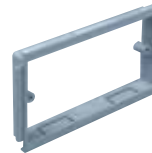
code	depth	pack
EAB2SG	32 - 47mm	1

Please see page 261 for more information on the range of adjustable boxes



**1 gang accessory plate**

code	pack
ESSP1SG	2



**2 gang accessory plate**

code	pack
ESSP2SG	2

Screened boxes



**1 gang screened accessory box (polycarbonate)**

code	depth	pack
ESSBA1SWH	30mm	20



**2 gang screened accessory box (polycarbonate)**

code	depth	pack
ESSBA2SWH	30mm	10

Screening

Conductive spray (CS) is unique to Marshall-Tufflex and is applied in the factory to assist with screening from electromagnetic interference to data and communications cabling within trunking systems. The coating is applied to a range of data boxes, covers, clip-on components and fabricated fittings.

**WARNING:** A CS coating is not suitable for low voltage circuits. As per the current version of BS 7671 wiring regulations. For data/voice use only.

# TWIN PLUS ALUMINIUM

Twin Plus aluminium is an extra deep cable management solution incorporating two large segregated high capacity compartments. Twin Plus is specifically designed for carrying large quantities of Cat 7a data cabling.



**Product information**

- 210 x 57mm
- 2 large permanent segregated compartments
- Each compartment can be subdivided
- Suitable for dado and skirting applications
- Bends angles and tees with a large bend radius
- Includes a range of clip-on fittings with built-in overlaps
- Fully compatible with Sterling flush power and data accessories
- All fittings are polycarbonate
- Available in silver grey as standard
- Aluminium systems specified with polycarbonate fittings meet accepted requirements for LSOH

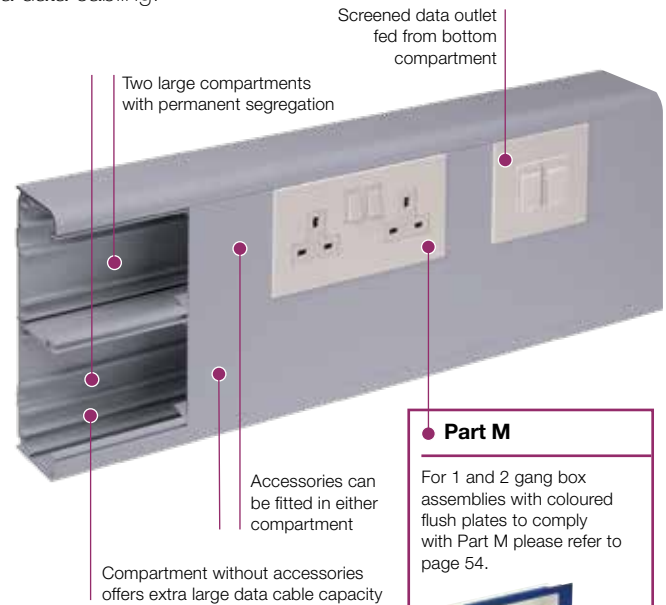
**Data information**

- Compliant up to Cat 7a<sup>#</sup>
- 50mm bend radius fittings
- Adjustable data box 32-47mm
- Screened divider and data boxes

**Note:** Allowance must be made for earthing the trunking system to comply with the current version of the BS 7671 Wiring Regulations.

Standard Colours
SG
SG: Silver Grey

**Colour code suffix:** to indicate the finish you require, add the required colour code to the end of the product code.



**Part M**

For 1 and 2 gang box assemblies with coloured flush plates to comply with Part M please refer to page 54.

**#Data fittings**

For made to order fittings to meet Cat 7a requirements please contact our Technical Team on +44 (0)1424 856688

Basic components



**Base unit**

code	pack
EMTA60SG	1 x 3m



**Main compartment cover (aluminium)**

code	pack
LTL1SG	1 x 3m

Fittings (polycarbonate)



**Coupler**

code	pack
EC60SG	1



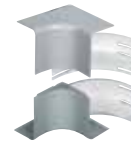
**End cap**

code	pack
EEC60SG	1



**Internal bend cover**

code	pack
EIBC60SG	1



**Internal bend assembly**

code	pack
EIB60SG	1



**Standard external bend cover**

code	pack
ESXBC60SG	1

**End cap retaining screws**

When installing end caps, additional retention can be achieved by using end cap retaining screws G1310 (pack 40).

p271

Technical Information

Fittings (polycarbonate)



**External bend assembly - standard**

code	pack
ESXB60SG	1

Capacity reduced by 50%



**External bend assembly - large**

code	pack
EXB60SG	1



**Flat angle cover**

code	pack
EFAC60SG	1



**Flat angle assembly**

code	pack
EFA60SG	1

Covers and cable inserts in Polycarbonate



**Flat tee assembly**

code	pack
EFTA60SG	1

Flat tees include covers, cable inserts in Polycarbonate with base in aluminium

Components



**Dividing fillet (PVC-U)**

code	pack
LDF1	8 x 3m



**Earth bonding kit**

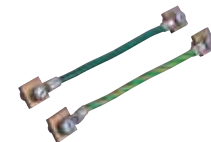
code	pack
LBT3	1



**Coupler pin**

code	description	pack
LDP1	ø2.0 x 20mm	10

To aid alignment of base profiles



**Bonding strap**

code	description	pack
LBS1	base to base 32 amp	5



**Bonding strap**

code	description	pack
LBS2	cover to base	5

Boxes and plates (polycarbonate)



**RCD/MCB housing**

code	description	pack
EAHCA1MWH	polycarbonate	1

\*Up to 4 modules can be accommodated

**Note:** RCDs and MCBs are not supplied by Marshall-Tufflex



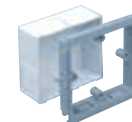
**1 gang accessory box 30mm deep**

code	pack
ESSB1SG	1



**2 gang accessory box 30mm deep**

code	pack
ESSB2SG	1



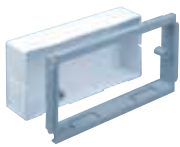
**1 gang adjustable depth box**

code	depth	pack
EAB1SG	32-47mm	1

Please see page 261 for more information on the range of adjustable boxes



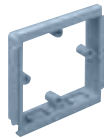
Boxes and plates (polycarbonate)



**2 gang adjustable depth box**

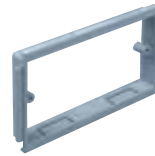
code	depth	pack
EAB2SG	32 – 47mm	1

Please see page 261 for more information on the range of adjustable boxes



**1 gang accessory plate**

code	pack
ESSP1SG	2



**2 gang accessory plate**

code	pack
ESSP2SG	2

Screened boxes



**1 gang screened accessory box (polycarbonate)**

code	depth	pack
ESSBA1SWH	30mm	20



**2 gang screened accessory box (polycarbonate)**

code	depth	pack
ESSBA2SWH	30mm	10

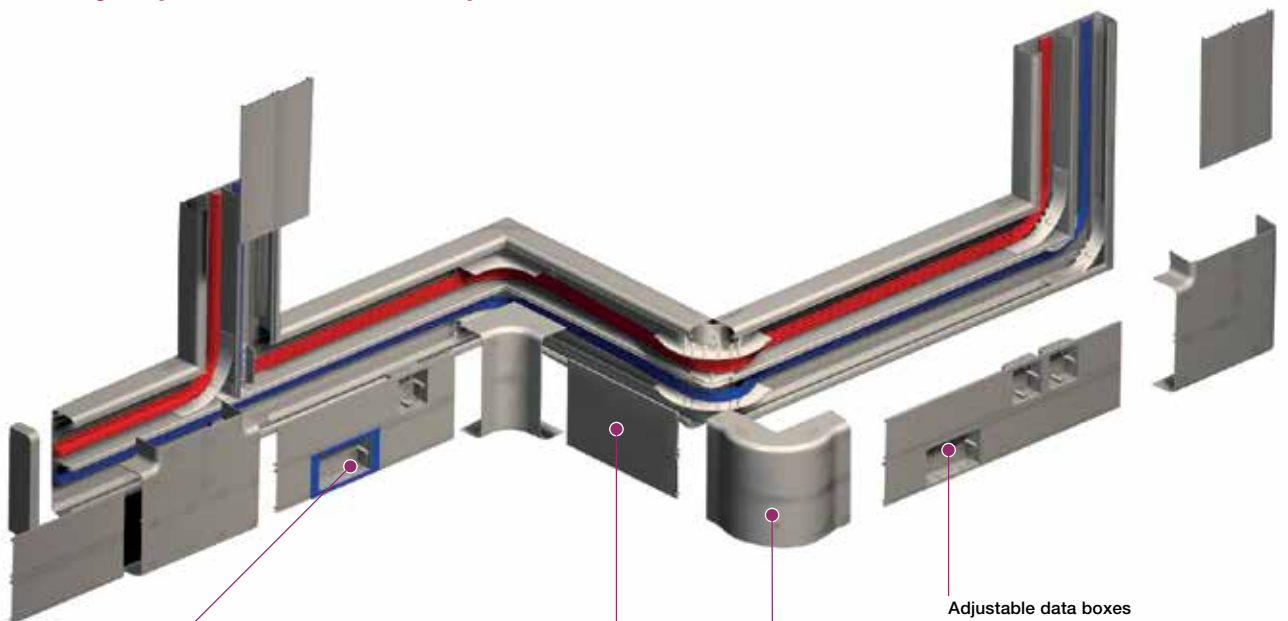
**Screening**

Conductive spray (CS) is unique to Marshall-Tufflex and is applied in the factory to assist with screening from electromagnetic interference to data and communications cabling within trunking systems. The coating is applied to a range of data boxes, covers, clip-on components and fabricated fittings.

**WARNING:** A CS coating is not suitable for low voltage circuits. As per the current version of BS 7671 wiring regulations. For data/voice use only.

**Twin Plus aluminium**

Twin Plus aluminium is a high cable capacity trunking system with a variety of practical features for power and data installations



**Part M boxes**  
Boxes available to meet Part M/DDA requirements for visual impairment

**Two separate compartments**  
Two large compartments that can be sub-divided, each with their own cover

**Polycarbonate flat tees and angles**  
With integral 50mm bend radius control

**Adjustable data boxes**  
Adjustable from 32-47mm  
Can be screened against EMI

ALUMINIUM TRUNKING SYSTEMS

# XL301 AND XL302 ALUMINIUM

COMPLIANT UP TO  
...CAT 7A...



XL aluminium trunking 301 and 302 are deep, 3-compartment systems that provide extra capacity and screening performance levels for data cabling.

## Product information

- 220 x 65mm
- 3 deep segregated compartments
- Compartments can be subdivided
- Suitable for dado and skirting applications (XL301 is recommended for dado application only)
- Includes a range of polycarbonate clip-on fittings with built-in overlaps
- Fully compatible with Sterling flush power and data accessories
- Aluminium systems specified with polycarbonate fittings meet accepted requirements for LS0H

## Data information

- Compliant up to Cat 7a\*
- Data compliant 25mm and 50mm bend radius
- External bends feature internal segregators
- Adjustable data box 32mm - 47mm
- Screened divider and data boxes

**Note:** Allowance must be made for earthing the trunking system to comply with the current version of the BS 7671 Wiring Regulations.



Individual covers for each compartment

See page 173 for quick reference chart

## Part M

For 1 and 2 gang box assemblies with coloured flush plates to comply with Part M please refer to page 54.



## \*Data fittings

For made to order fittings to meet Cat 7a requirements please contact our Technical Team on +44 (0)1424 856688

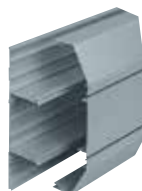
## Standard Colour

SG

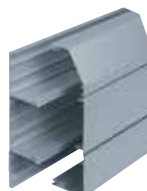
SG: Silver Grey

**Colour code suffix:** to indicate the finish you require, add the required colour code to the end of the product code.

## Trunking profiles



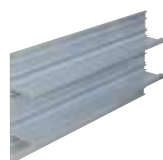
**XL301**  
size 220 x 65mm



**XL302**  
size 220 x 65mm

For dado installation only

## Basic components



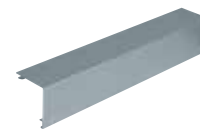
**Base unit**  
code ELTB300 pack 2 x 3m



**Main compartment cover**  
code LTL1SG pack 1 x 3m



**Angled cover**  
code ELAC300SG pack 1 x 3m



**Square cover**  
code ELSC300SG pack 1 x 3m

p272

Technical Information

XL301 fittings



**XL301  
Coupler**

code	description	pack
EC301SG	polycarbonate	1



**XL301  
End cap**

code	description	pack
EEC301SG	polycarbonate	1



**XL301  
Internal bend**

code	description	pack
EIB301SG	polycarbonate	1



**XL301  
External bend**

code	description	pack
EXB301SG	polycarbonate	1



**XL301  
Flat angle – up/down**

code	description	pack
EFA301SG	aluminium	1



**XL301  
Flat tee – up/down**

code	description	pack
EFT301SG	aluminium	1

XL302 fittings



**XL302  
Coupler**

code	description	pack
EC302SG	polycarbonate	1



**XL302  
End cap**

code	description	pack
EEC302LHSG	polycarbonate	1
EEC302RHSG	polycarbonate	1

LH = Left hand RH = Right hand



**XL302  
Internal bend**

code	description	pack
EIB302SG	polycarbonate	1



**XL302  
External bend**

code	description	pack
EXB302SG	polycarbonate	1



**XL302  
Flat angle – upward**

code	description	pack
EFA302USG	aluminium	1



**XL302  
Flat angle – downward**

code	description	pack
EFA302DSG	aluminium	1

**XL Trunking 302 flat tees**

Where profiles have one angled cover and one square cover, as with XL302, it is possible to create a tee by changing the top or bottom cover so that covers match the profile of the trunking. For example:

- Upward tee – select XL301 tee remove the angled bottom cover and replace with square cover.

Components



**Dividing fillet (PVC-U)**

code	description	pack
ELDF200	8 x 3m	



**Earth bonding kit**

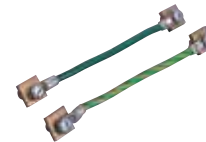
code	description	pack
LBT3		1



**Coupler pin**

code	description	pack
LDP1	ø2.0 x 20mm	10

To aid alignment of base profiles



**Bonding strap**

code	description	pack
LBS1	base to base 32Amp	5



**Bonding strap**

code	description	pack
LBS2	cover to base	5

Boxes and plates (polycarbonate)



**RCD/MCB housing**

code	description	pack
EAHCA1MWH	polycarbonate	1

Not available in silver grey.  
\*Up to 4 modules can be accommodated.  
**Note:** RCDs and MCBs are not supplied by Marshall-Tufflex.



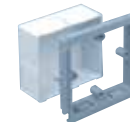
**1 gang accessory box 30mm deep (polycarbonate)**

code	description	pack
ESSB1SG		1



**2 gang accessory box 30mm deep (polycarbonate)**

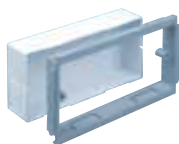
code	description	pack
ESSB2SG		1



**1 gang adjustable depth box**

code	description	pack
EAB1SG	32-47mm	1

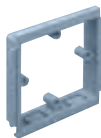
Please see page 261 for more information on the range of adjustable boxes



**2 gang adjustable depth box**

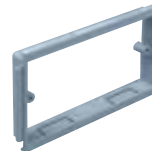
code	description	pack
EAB2SG	32 - 47mm	1

Please see page 261 for more information on the range of adjustable boxes



**1 gang accessory plate (polycarbonate)**

code	description	pack
ESSP1SG		2



**2 gang accessory plate**

code	description	pack
ESSP2SG		2

Screened boxes



**1 gang screened accessory box (polycarbonate)**

code	description	pack
ESSBA1SWH	30mm	20



**2 gang screened accessory box (polycarbonate)**

code	description	pack
ESSBA2SWH	30mm	10

**Screening**

Conductive spray (CS) is unique to Marshall-Tufflex and is applied in the factory to assist with screening from electromagnetic interference to data and communications cabling within trunking systems. The coating is applied to a range of data boxes, covers, clip-on components and fabricated fittings.

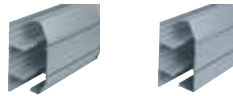
**WARNING:** A CS coating is not suitable for low voltage circuits. As per the current version of BS 7671 wiring regulations. For data/voice use only.

**Quick reference chart**

XL301 and XL302

**3 Compartment**

XL301	XL302
220 x 65mm	220 x 65mm



<p><b>Base unit</b></p> <p>Pack 2 x 3m</p> <p>Features earth bonding rail and screw ports to aid the fastening of pipe clips and gas valves etc</p>		ELTB300	ELTB300
<p><b>Main compartment cover</b></p> <p>Pack 1 x 3m</p>		LTL1SG	LTL1SG
<p><b>Angled cover</b></p> <p>Pack 1 x 3m</p>		2 x ELAC300SG	1 x ELAC300SG
<p><b>Square cover</b></p> <p>Pack 1 x 3m</p>		-	1 x ELSC300SG
<p><b>Couplers</b></p> <p>Pack 1</p>		EC301SG	EC302SG
<p><b>End caps</b></p> <p>Pack 1</p> <p>left or right hand</p>		EEC301SG	EEC302LHSG EEC302RHSG
<p><b>Internal bends</b></p> <p>Pack 1</p>		EIB301SG	EIB302SG
<p><b>External bends</b></p> <p>Pack 1</p>		EXB301SG	EXB302SG
<p><b>Flat angles</b></p> <p>Pack 1</p> <p>upward or downward</p>		EFA301SG	EFA302USG EFA302DSG
<p><b>† Flat tees</b></p> <p>Pack 1</p> <p>† See Flat Tee information below</p>		EFT301SG	†

**† XL Trunking 302 flat tees**

Where profiles have one angled cover and one square cover, as with XL 302, it is possible to create a tee by changing the top or bottom cover so that covers match the profile of the trunking. For example:

- Upward tee – select XL 301 tee remove the angled bottom cover and replace with square cover.

ALUMINIUM TRUNKING SYSTEMS

